

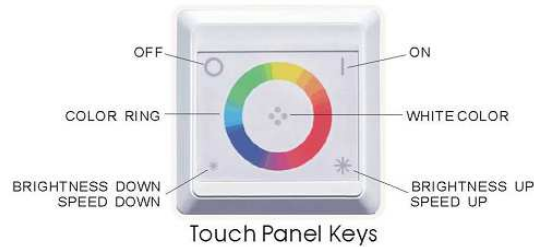
5016 RGB Controller with Music Control

General Description

Thank you for using this 3CH LED RGB controller! It is designed for LED lights, such as LED strips, lamps and LED billboards etc. This controller has a touch panel, and provides the intuitive lighting control. It is very easy to adjust the color and brightness. It is standard 86 type wall mounted box, and is easy to mount on wall and other places.

I. Specifications

1. Working temperature : -20-60C
2. Supply voltage : DC5V DC12V DC24V
3. Product size : 86X86X25mm(controller)
4. Package size: 88X88X27 mm
5. Gross Weight : 90g
6. Power: 8A/each color, RGB 3 Colors
7. OUTPUT: 3 three CMOS open drain



II. Function & Features

1. With this controller you can easily change the LED RGB light colors, just touch the panel;
2. Very friendly human interface, fantastic user experience;
3. Two kinds of Presentation Modes: Gradual change mode and hopping change mode(U-CON-WTR1C-3CH);
4. Fantastic music mode: The LED light will hopping with the music sound(U-CON-WTR1C-3CH);
4. You can adjust the color finely;
5. The brightness can be easily adjusted;
6. Memorize the last state after power turn-off.

III. Function of Panel Keys

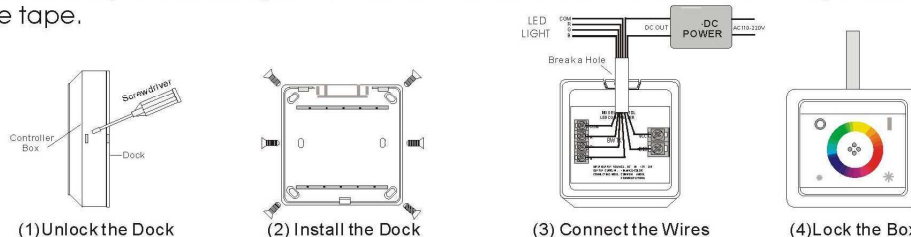
- : Power OFF key;
- I : Power ON key, Presentation Mode select key;
- ✱ : The LED brightness up, Speed Up;
- * : The LED brightness down, Speed Down;
- ⊕ : Display the white color;
- 🌈 : Slide the color ring with your finger, LED RGB light will show the same color

Two Presentation Modes:

- 1) Gradual change model: Touch ON button again under monochrome mode condition, LED RGB light will be changed into gradual change mode. Touch ✱ button will speed up the color change, touch * button will slowdown.
- 2) Hopping mode: Under gradual change mode condition, touch ON button, the LED will be changed into hopping mode. Touch ✱ button will speed up the hopping, touch * button will slowdown.
- 3) Music mode: Under hopping mode, touch ON button, the LED will be changed into Music Mode. In this mode, the brightness and color of LED light will be changed with the music sound.
- 4) Under gradual change, hopping or music mode, touching ON button will change one to the other. If you want to re-enter monochrome mode, just touch the color ring or white color key.

IV. Mounting and Connecting Diagram

Using a small screwdriver to unlock the controller from the dock, the dock can be fixed to the wall by means of flat (countersunk)screws with a maximum diameter of 4mm or by means of double-sided adhesive tape.



Connect the wires correctly as the diagram, make sure the voltage, current and the color, finally, lock the controller box to the dock.

V. Safety Attention

1. Supply voltage of this product must be the same as LED light and also the same marked in the surface of the controller;
2. Lead wires should be connected correctly according to the diagram above;
3. Warranty of this product is one year, but exclude the artificial situation of damaged.

Mouser Electronics

Authorized Distributor

Click to View Pricing, Inventory, Delivery & Lifecycle Information:

Inspired LED:

5016